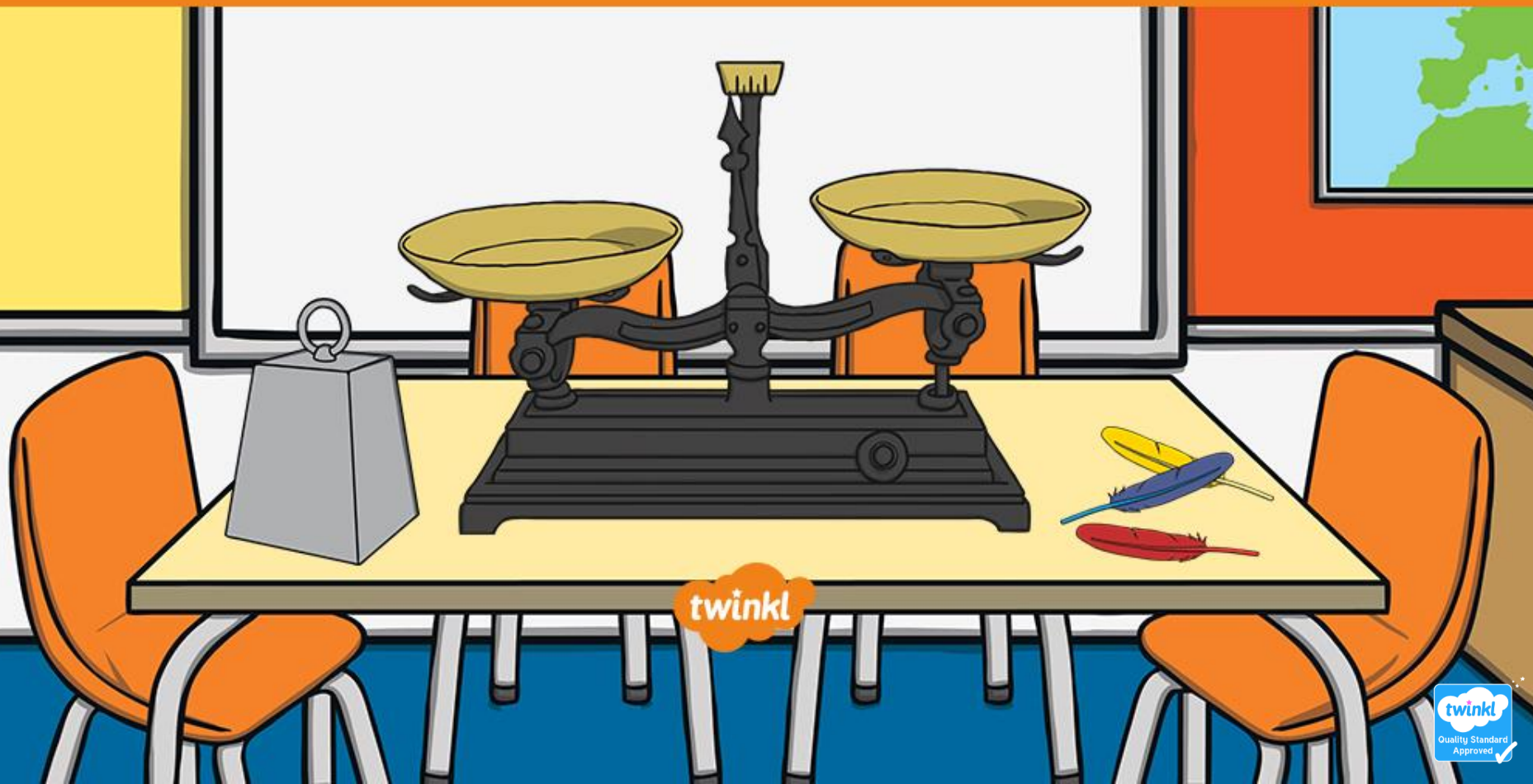


# Weight

Exploration of Weight: Senior Infants



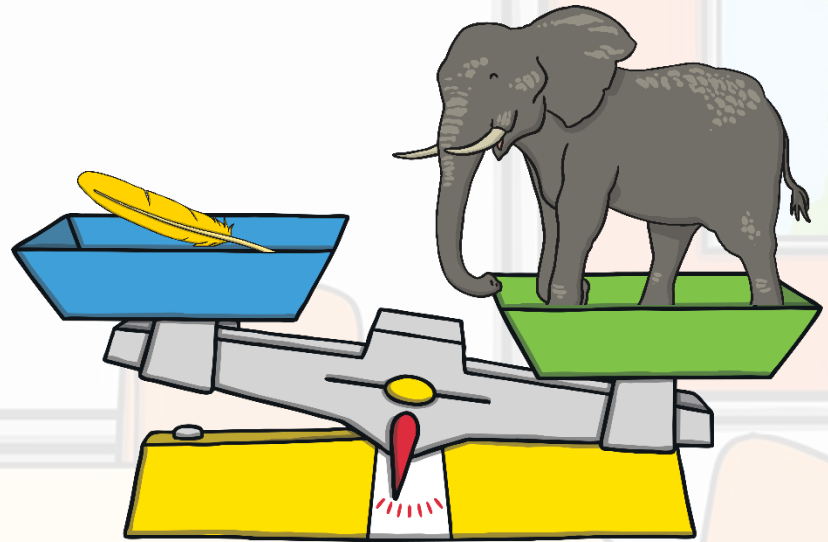
# What Is Weight?

**Weight is how heavy something is.**

Some things are really heavy, like an elephant.

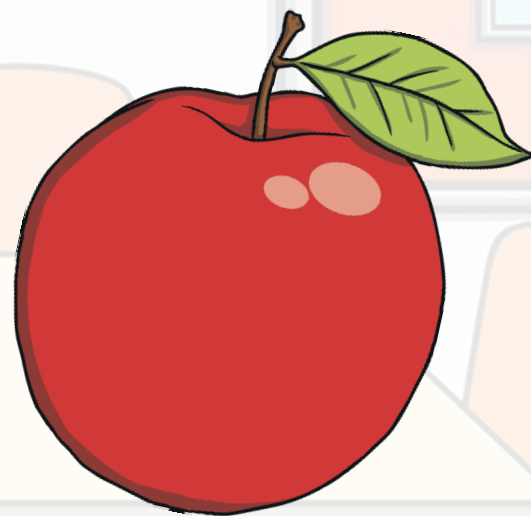
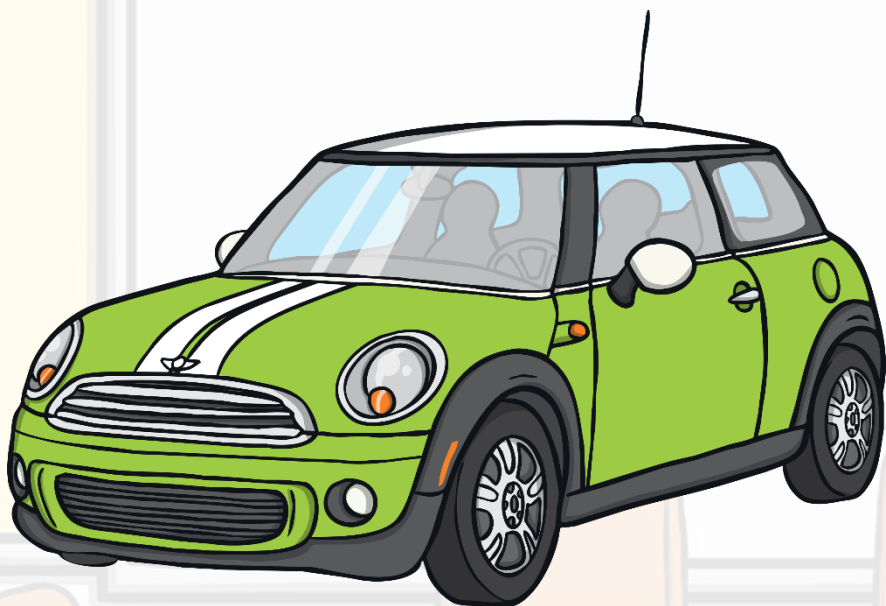
Some things are really light, like a feather.

Weight is measured using a balance or scales.



Have a look at the next few slides and see if you can identify which object is heavier and which is lighter.

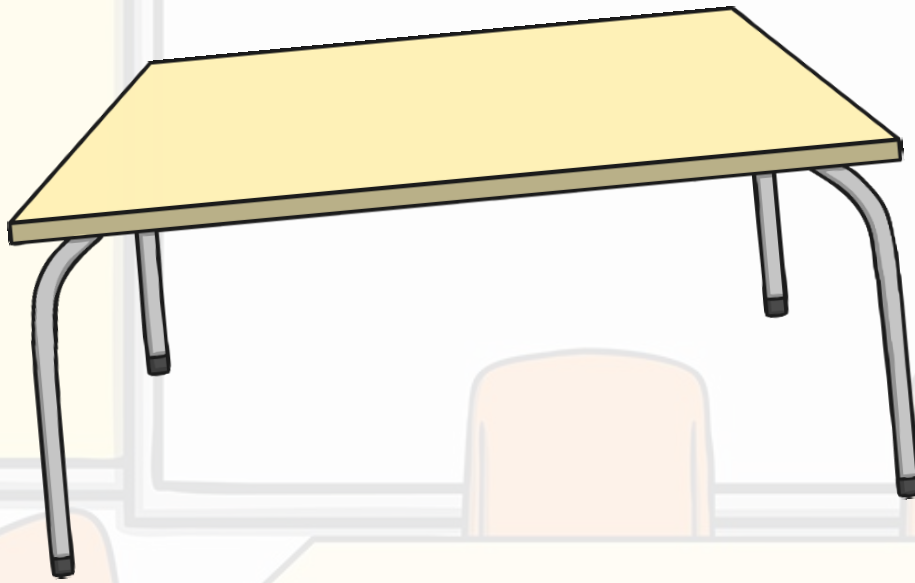
Which object is heavier?



**Which object is heavier?**



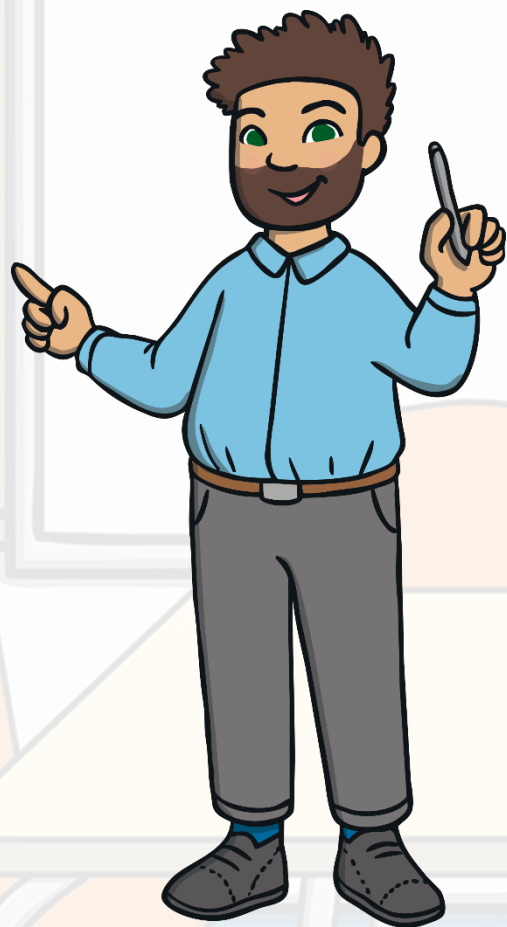
**Which object is heavier?**



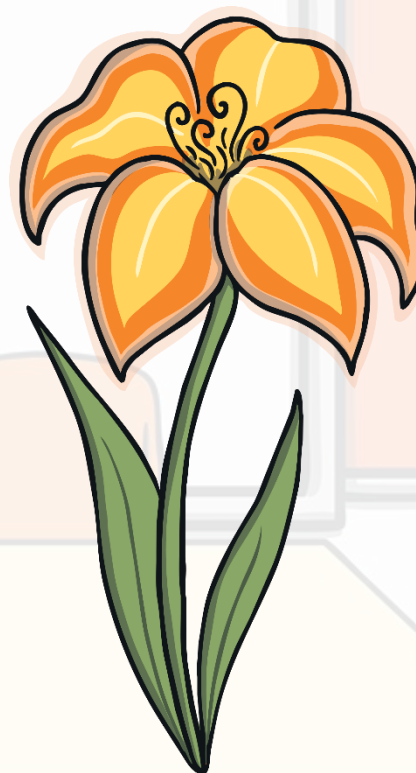
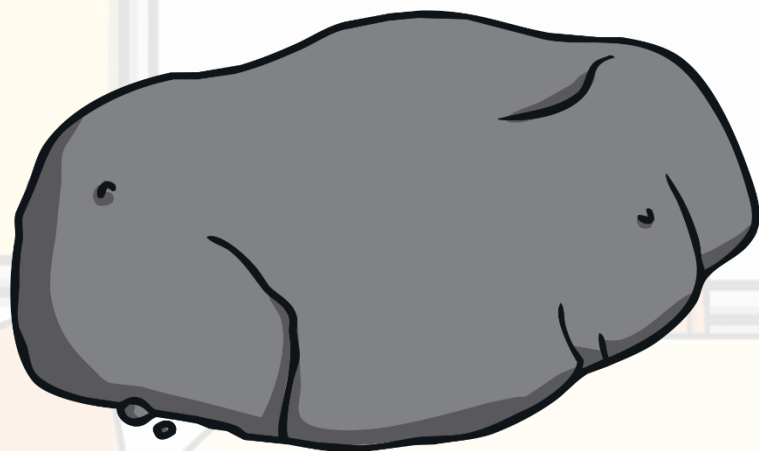
Which animal is heavier?



Which person is heavier?

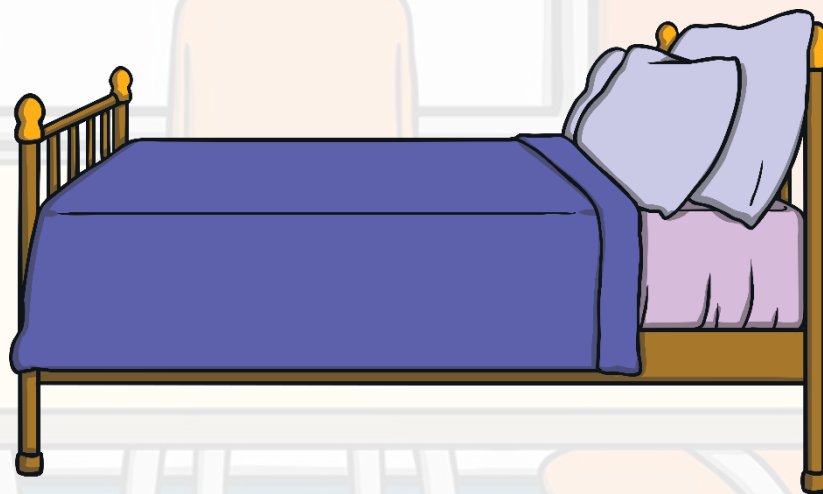
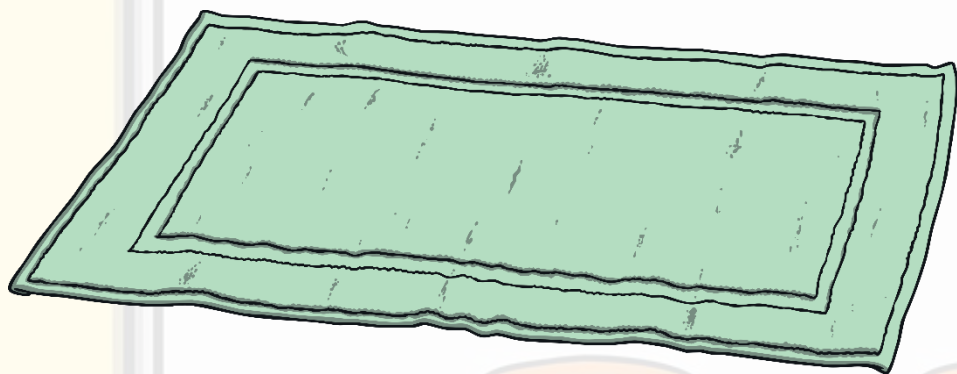


Which object is lighter?





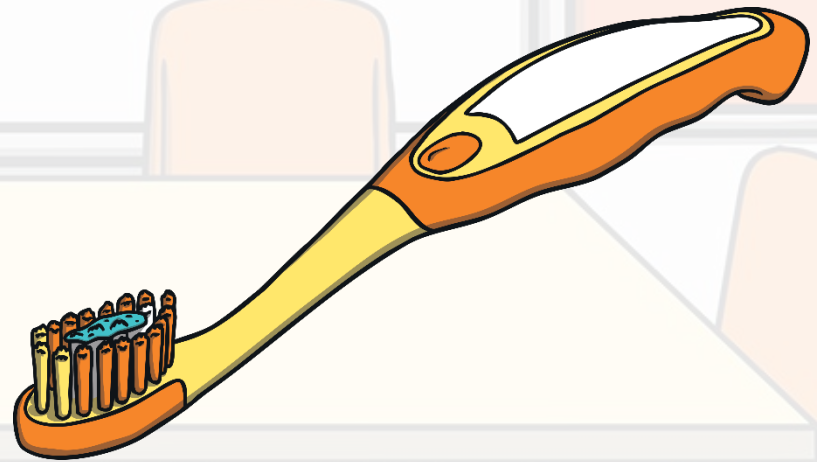
Which object is lighter?



Which animal is lighter?



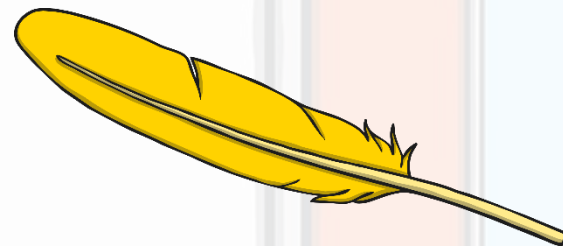
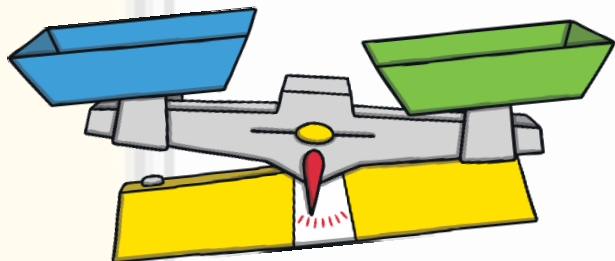
# Which object is lighter?



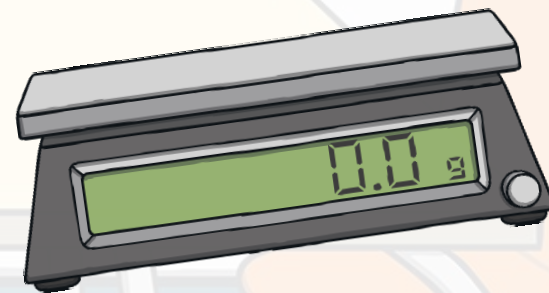
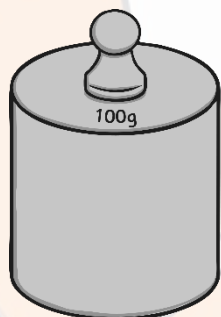
Which object is lighter?



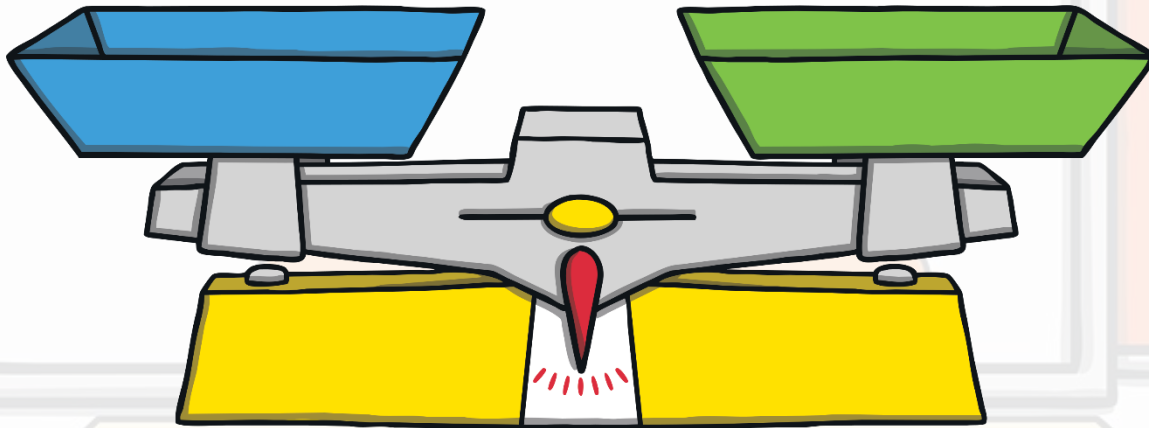
# Weighty Words



We use lots of different words when we talk about weight. Can you think of any more?

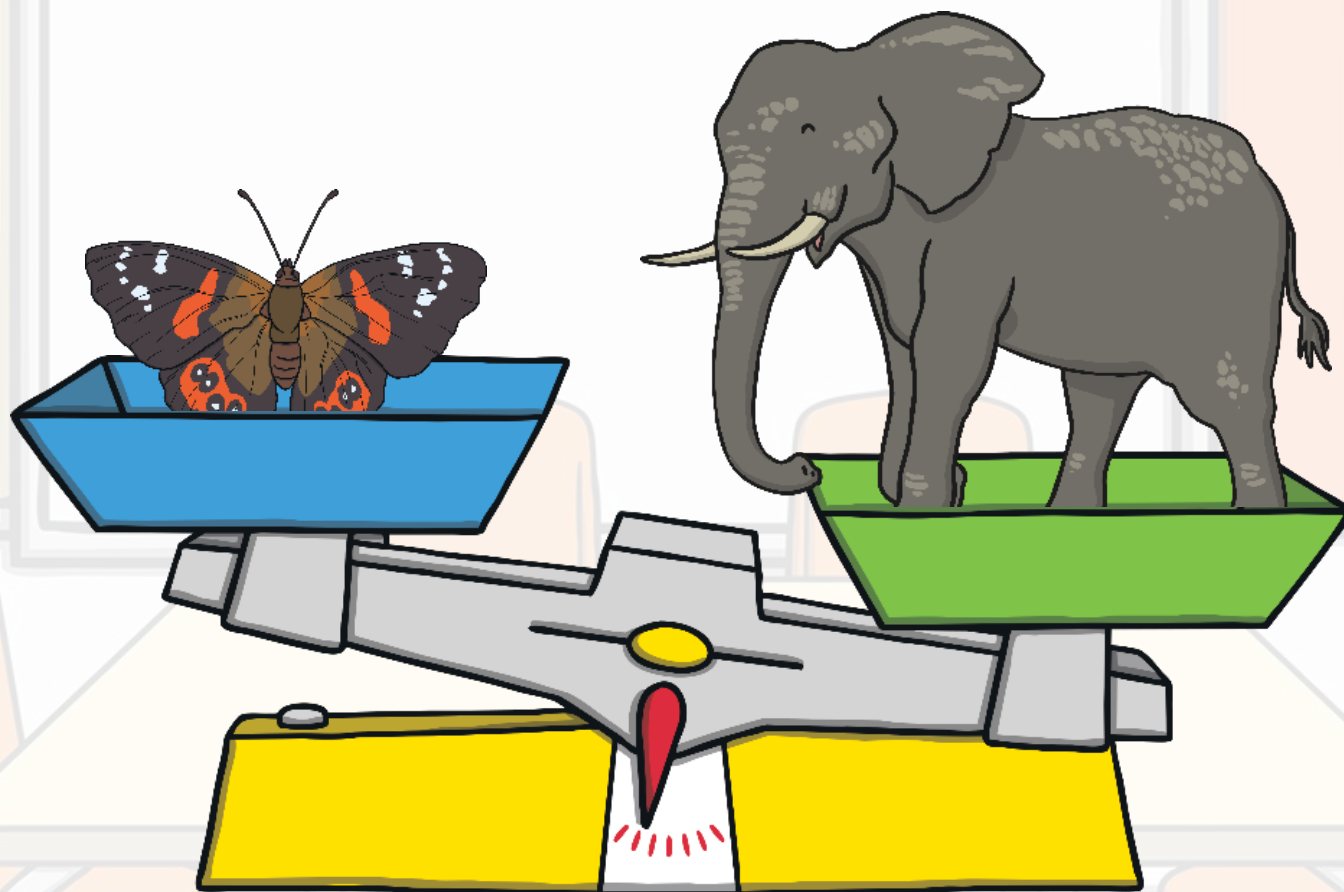


# Balance

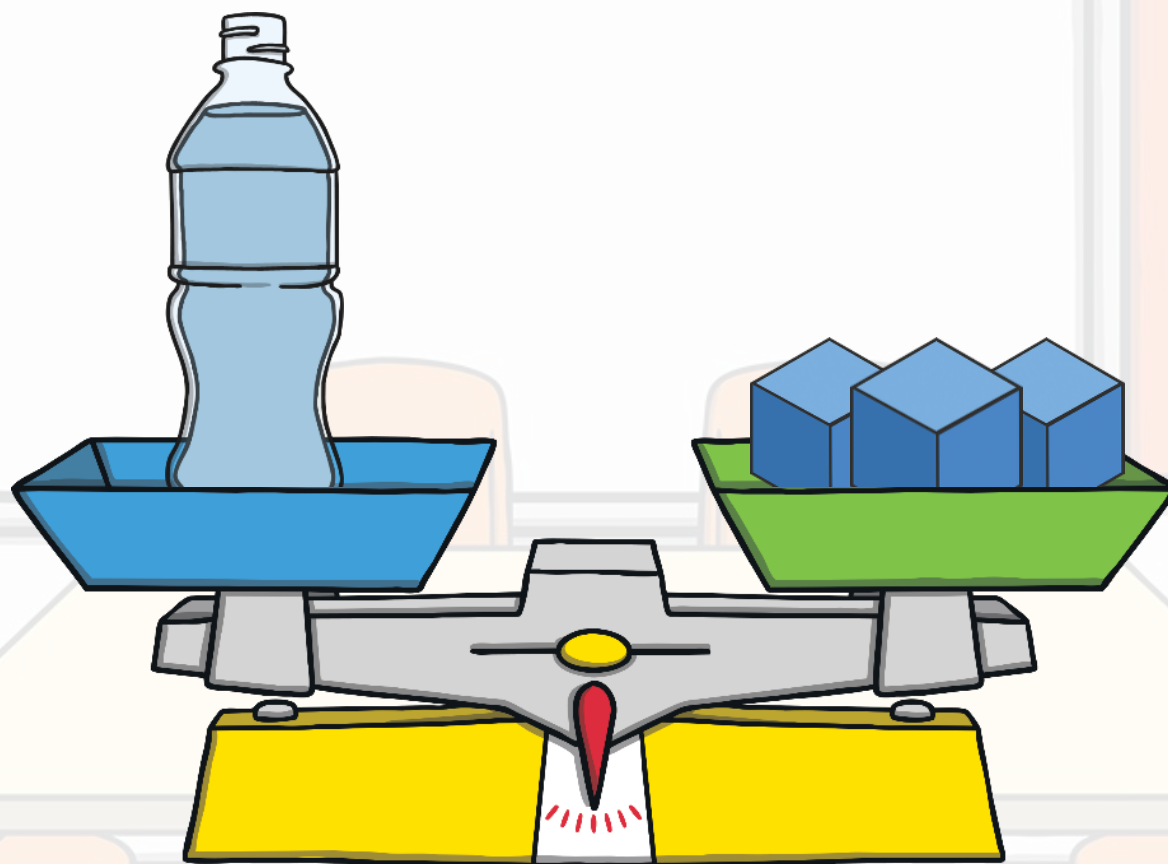


We use balances to measure weight in Senior Infants.

# How Does a Balance Work?



# How Does a Balance Work?



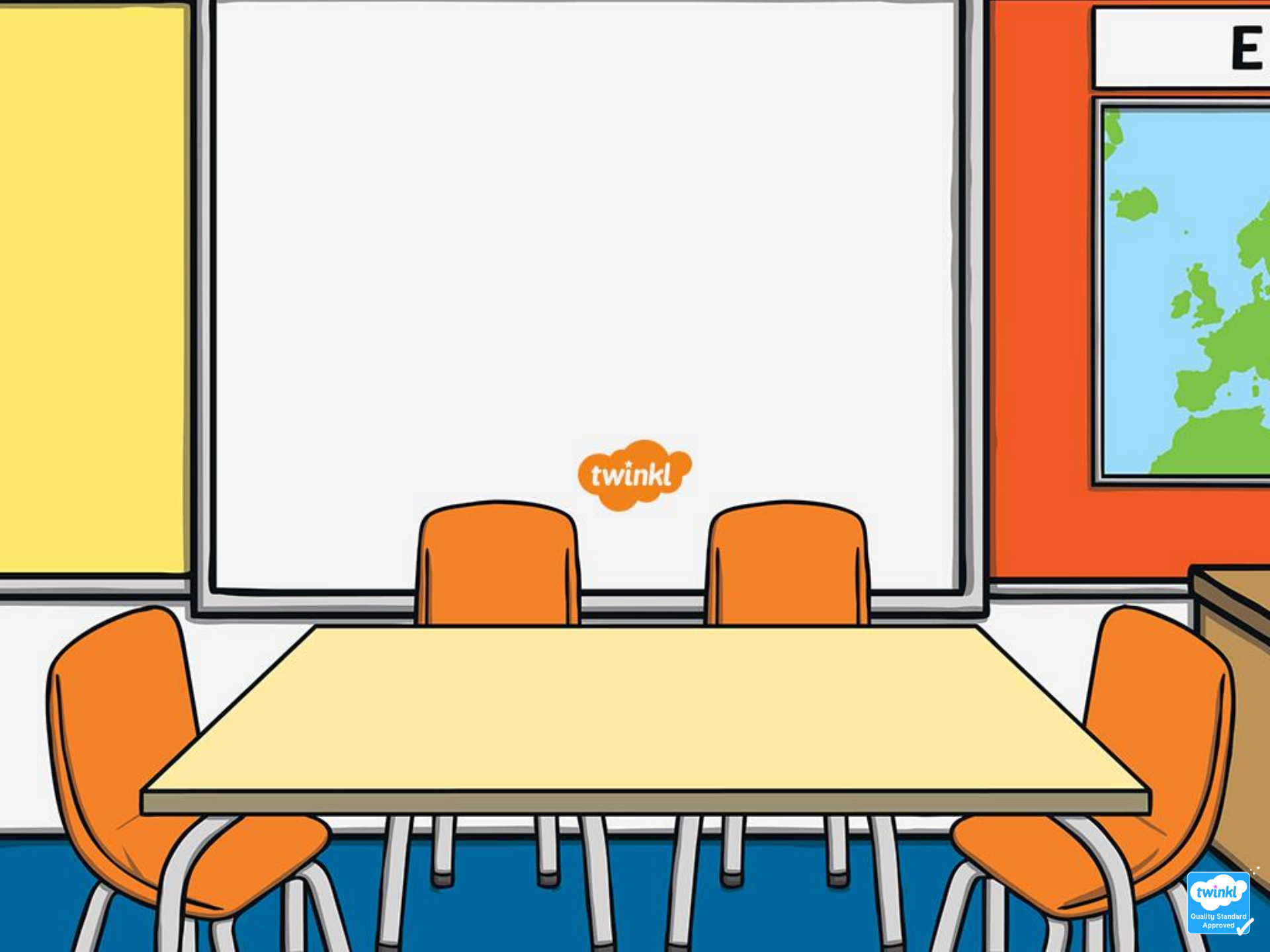


# Weight in Your Classroom

**Now it's time to have some fun with weight in your classroom!**

Using a balance, compare two objects from your classroom to see which is heavier and which is lighter.

When finished, weigh each of your objects using a non-standard unit such as cubes, compare bears or links.



twinkl

E

