



Scoil Mhuire Gan Smál, New Inn

Issue 119/21

Oct 2021

Dates to remember

• Mid-term break

School closed

Monday to Friday

25th to 29th October

• 1/2 day Fri 17th Dec

School closes

at 12noon

• Christmas Holidays

School closes at **12noon**
on Wednesday 22nd Dec

Re-opens Thurs 6th Jan

REMINDER

All absences must be notified online on the front page of our website

FEES

We thank all those who have paid the school fees (€58) to date.

There are just a few outstanding. We would appreciate it if you could pay these in full or part payment in the next week.

CONFIRMATION - 8/10/21

Congratulations to the eleven 6th class & twelve 1st Years who made their Confirmation on Friday 8th October



Congratulations to the twelve 3rd class pupils who made their First Holy Communion on Saturday 16th October.



Split the Pot

Congratulations to Méabh O' Connor (2nd) who won €114 in our first Split the Pot draw.

Please return your envelopes by Wednesdays to be included in Fridays draw. The more entries we have the bigger the "Pot" There will be no draw on Friday 29th October.



HALF DAY

Please note that the school will be closed for a half day on **Fri 17th December** to facilitate teacher training in the new Primary Language Curriculum. School will close at 12noon and buses will travel at that time. This is an extra closure and would not have appeared on the school calendar.

SHOEBOXES—TEAM HOPE

The final day for dropping shoeboxes in to school is **Monday 1st November**. Perhaps over the mid-term break you might get a chance to make up a shoebox.

BIRTHDAYS

We kindly ask that children do not bring cakes, buns, sweets, presents etc. to school when it is a classmates birthday. This is to ensure that no child misses out and is in line with our healthy eating policy. Also, kindly ensure that birthday party invitations are not distributed in school.

MUSIC GENERATION TIPPERARY—PRIMARY BEATS

Primary Beats! is a student-centred performance approach to early years music - making through singing activities and movements. Musician—Niamh Fenton has been coming to the school for the last three weeks and will continue until May next year. At the moment she is concentrating on the Junior end but after Christmas she will be involved with the Senior end. Niamh gives a half hour tuition to each class once a week. Part of your school fees goes towards payment for this initiative and the Parents Council have also kindly agreed to subsidise this.

We wish the Fitzgerald family good luck as they open their doors to Marlhill Open Farm this week. We hope the venture goes well and wish them every success in the future



We would like to thank Con Traas of “The Apple Farm”, Moorstown, Cahir for his very generous donation of an apple for each pupil and member of staff. Con has provided this donation to all the schools in the area over many years in his bid to promote healthy eating.

Children’s Corner by Emma and Shóna



*Children
have been
busy
creating
some
Halloween
art*





Junior Infant—Chalk Pastel Halloween Art





ZUMBA

For the last 6 week the children have been busy learning new dance/Zumba moves with Clodagh. Every child gets involved and has great fun. From juniors to 6th class every Tuesday morning everybody gets active!

Part of your school fees goes to pay for these classes.

FUNDRAISER

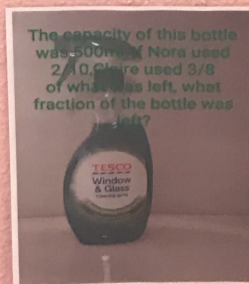
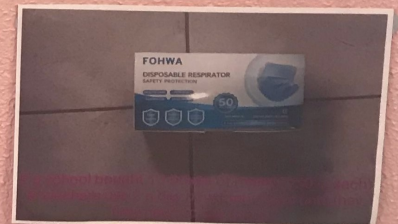
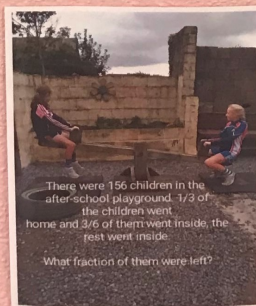
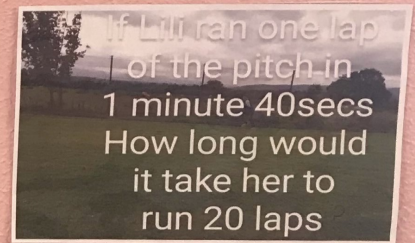
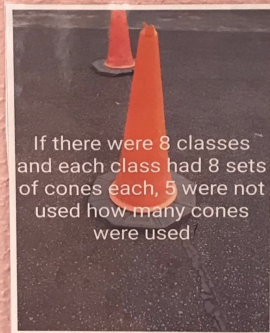
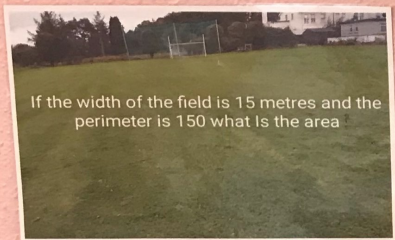
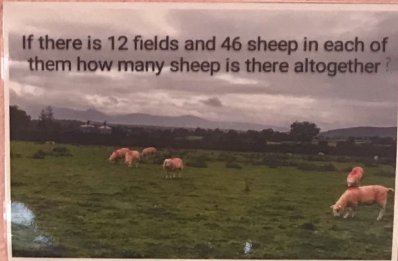
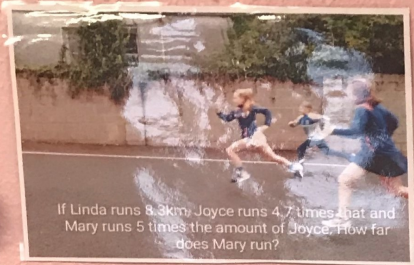
Scoil Mhuire gan Smál and New Inn Boys School Parents Associations are coming together to support the upcoming darts tournament on Saturday 6th November. We would be grateful if parents and or local businesses could support us by donating raffle prizes to raffle on the night. Prizes could be dropped to the school office and or to Aisling O' Dwyer or Sinead Boland. Anything would be appreciated.

We are also looking to see if anyone has a contact with a sports person or famous person who may be willing to donate a signed jersey for an auction on the night.

All proceeds this night go towards the purchase of 2 defibrillators, one for each school, which we can appreciate is a very worthy cause indeed.

Tickets for this draw are on sale in the school also for families to support.

MATHS EYES



Some of our Maths Eyes entries this year

JUNIORS



SENIORS



1st & 2nd



3rd & 4th



5th & 6th

